

Wilmette Park District
Wilmette, Illinois

Sec. 34 66, P L & R.
U. S. POSTAGE
PAID
Permit No 7
WILMETTE, ILLINOIS

10/17/54

Residential Patron
Letter Carrier Route
Local

**CORRECT POLLING PLACE
PRECINCT 3
HARPER SCHOOL!**

Think of Your Present—

And Plan for Your Future!

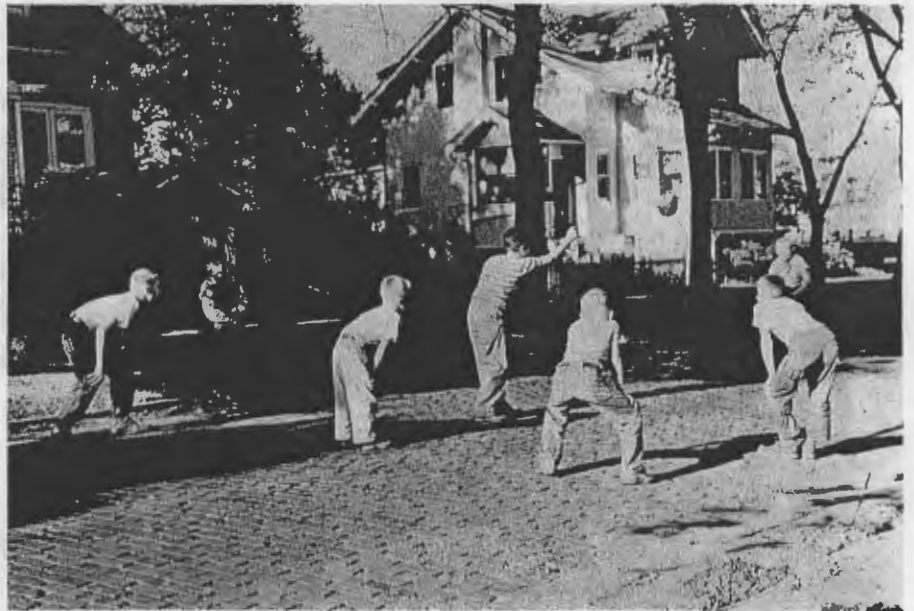
**This Is An Important Message
From Your Wilmette Park District**

YOU Have An Important C

The Wilmette Park Board has approved plans for acquisition of approximately 50 acres in the Highcrest School district, to be developed as a village-wide playfield and community park.

The project is a step forward in the over-all village plan and the progressive park and recreation program.

It has been officially endorsed by the Planning Board, Village Board, Recreation Board, League of Women Voters, Parent-Teacher Association, and Home Owners Association, and by church and community organizations and youth leaders.



Saturday, October 9, you will have an opportunity to state your choice - whether Wilmette children and youths are forced to play in the streets . . .



. . . or whether they shall be provided with adequate space and facilities for organized sport and supervised play. **IT'S YOUR CHOICE.**

Choice To Make October 9th!

It is planned to acquire a suitable site in the area roughly bounded by Hibbard, Glenview, and Illinois Roads and Lake Avenue, in the approximate geographic center of the village.

This is the last chance to acquire this property, as the area is rapidly being developed for home building.

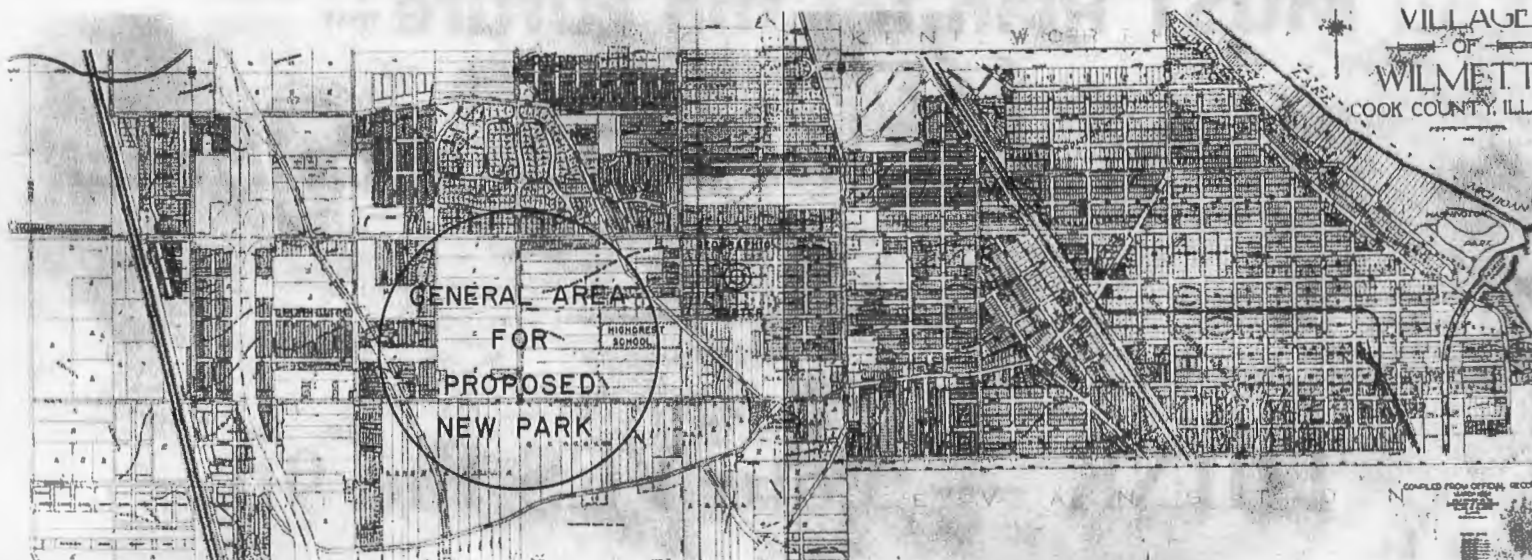
Acquisition of the site and initial development work is estimated to cost \$250,000. Saturday, October 9, you will have an opportunity to vote for a bond issue for this amount. You will have an opportunity to state your choice — whether Wilmette does or does not develop a suitable playfield for youth activities.

The only remaining open area in Wilmette is rapidly being ringed with new homes. Only by acquiring a playfield and park site NOW—at acreage prices— can this need be met. Homes like these cannot be condemned and moved at less than fantastic costs. The wanted area is vacant now; in a few months, real estate men agree, it will be subdivided and out of reach for village use.

Polling places will be open from 6 a.m. to 5 p.m. Saturday, October 9, in the Stolp, Howard, and Highcrest Schools. **MAKE YOUR CHOICE EARLY. Vote Yes!**



Map below shows location of planned playfield and park development — in the approximate geographic center of Wilmette; easily reached from all parts of the village. Playfield would adequately serve recreation needs of entire village.



This Is The Last Available Property!



Saturday, October 9, you can state your choice — shall this area be transformed into a suitable playfield for village-wide recreation needs, or subdivided into building lots. This is the last chance to obtain enough land for playfield purposes. Existing parks cannot be expanded and no other large area within the village remains — for the moment — undeveloped. Vote Yes!

You MUST Plan for the Future —

As Well as Think of the Present!

THINK — Vote YES the 9th